

Early Bird Registration  
Discount Ends  
Friday 8/1

PART OF THE HERITAGE VALUE-BASED  
CARE CONFERENCE SERIES

# Special Edition of the Virtual Value-based Payment Summit: How to Prepare for the CMS and CMMI Value-Based Care Strategic Initiatives September 3 – 5, 2025

Virtual Online Video Event Live and Archived

Media Partners: Harvard Health Policy Review, Health Affairs and Inside Health Policy

## SUMMIT CO-CHAIRS



**Adam Boehler**, *Founder & Managing Director, Rubicon Founders; Former CEO, International Development Finance Corporation; Former Deputy Administrator and Director, Center for Medicare, Centers for Medicare & Medicaid Services, Nashville, TN*



**Theresa Dreyer, MPH**, *Chief Executive Officer, Health Care Transformation Task Force; Former Lead, Value Based Care, Association of American Medical Colleges; Former Model Lead, Centers for Medicare and Medicaid Services, Washington, DC*



**Emily (DuHamel) Brower, MBA**, *President and Chief Executive Officer, National Association of ACOs (NAACOS); Former SVP, Clinical Integration & Physician Services, Trinity Health, Detroit, MI*



**Mara McDermott, JD**, *Chief Executive Officer, Accountable for Health; Former Senior Vice President of Federal Affairs, America's Physician Groups, Washington, DC*



**Susan Dentzer, MS**, *President and Chief Executive Officer, America's Physician Groups; Former Editor in Chief, Health Affairs; Former Health Correspondent, PBS NewsHour, Washington, DC*



**Farzad Mostashari, MD**, *Chief Executive Officer, Aledade; Former National Coordinator for Health Information Technology; Former Assistant Commissioner, New York City Department of Health and Mental Hygiene, Washington, DC*

[www.valuebasedpaymentsummit.com](http://www.valuebasedpaymentsummit.com)

AGENDA SUBJECT TO UPDATES AND CHANGE • AGENDA CURRENT AS OF JULY 30, 2025

**GHC** HEALTH  
CARE  
Global Health Care, LLC

# VIRTUAL VALUE-BASED PAYMENT SUMMIT SPECIAL EDITION: How to Prepare for CMS and CMMI Value-Based Care Strategic Initiatives

Produced by:  
**GHC** HEALTH CARE  
Global Health Care, LLC

All times are EST.

Subject to Regular Updates • Agenda Current as of July 30, 2025

## DAY 1: WEDNESDAY, SEPTEMBER 3, 2025

### OPENING PLENARY SESSION: OVERVIEW OF CMS INNOVATION CENTER STRATEGY TO MAKE AMERICA HEALTHY AGAIN & ITS THREE PILLARS

10:00 am

#### Sponsor Welcome



**Richard Merkin, MD**, Founder, President and Chief Executive Officer, Heritage Group; Board, California Institute of Technology and USC Keck School of Medicine; Founder Richard Merkin Foundation for Stem Cell Research, Broad Institute, Harvard and MIT, Los Angeles, CA



**Interviewed by: Don Crane, JD**, Former President & CEO, America's Physician Groups; Co-producer Primary Care Transformation Summit and Medicare Advantage Summit, Los Angeles, CA

10:15 am

#### Co-chair Introductions



**Emily (DuHamel) Brower, MBA**, President and Chief Executive Officer, National Association of ACOs (NAACOS); Former SVP, Clinical Integration & Physician Services, Trinity Health, Detroit, MI (Co-chair)

10:30 am

#### Keynote Fireside Chat: Overview of the CMS Innovation Center's Strategy to Make America Healthy Again



**Abe Sutton, JD**, Director, Center for Medicare and Medicaid Innovation, Centers for Medicare and Medicaid Services; Former Policy Advisor, Domestic Policy Council, The White House (Trump), Washington, DC



**Interviewed by: Mara McDermott, JD**, Chief Executive Officer, Accountable for Health; Former Senior Vice President of Federal Affairs, America's Physician Groups, Washington, DC

11:00 am

#### Featured Fireside Chat: Overview of Patient Empowerment Pillar



**Gita Deo, MHMP**, Senior Advisor and Chief of Staff, Center for Medicare and Medicaid Innovation, Centers for Medicare and Medicaid Services; Former Associate Partner, McKinsey, Washington, DC



**Interviewed by: Theresa Dreyer, MPH**, Chief Executive Officer, Health Care Transformation Task Force; Former Lead, Value Based Care, Association of American Medical Colleges; Former Model Lead, Centers for Medicare and Medicaid Services, Washington, DC

11:30 am



#### Featured Fireside Chat: Overview of the CMS Innovation Center's Evidence-based Prevention Pillar

**Susannah Bernheim, MD, MHS**, Chief Medical Officer, Center for Medicare and Medicaid Innovation, Center for Medicare and Medicaid Services; Former Associate Professor, Department of Internal Medicine, Yale University, Washington, DC



**Interviewed by: Aisha Pittman, MPH**, Senior Vice President of Government Affairs, National Association of ACOs; Former Vice President, Premier Inc, Washington, DC

12:00 pm

#### Featured Fireside Chat: Overview of the Choice and Competition Pillar



**Gary Bacher, JD**, Chief Strategy Officer, Center for Medicare and Medicaid Innovation, Center for Medicare and Medicaid Services; Former Senior Vice President; AHIP; Former Vice President, UnitedHealth Group, Washington, DC



**Interviewed by: Valinda Rutledge, MBA**, Executive Vice President for Advocacy and Education, America's Physician Groups; Former Group Director, Patient Care Model Group and BPCI Lead, Centers for Medicare and Medicaid Services, Washington, DC

12:30 pm

#### Luncheon Break

## AFTERNOON PLENARY SESSION

1:00 pm

#### Co-chair Introductions



**Theresa Dreyer, MPH**, Chief Executive Officer, Health Care Transformation Task Force; Former Lead, Value Based Care, Association of American Medical Colleges; Former Model Lead, Centers for Medicare and Medicaid Services, Washington, DC (Moderator)

All times are EST.

## CONCURRENT SESSIONS GROUP 1

1:15 pm – 2:00 pm

### Concurrent Session 1: What are the Barriers to Promoting Healthy Lifestyles in VBC Arrangements and What Flexibilities or Payment Changes could Help People Prevent Disease or Manage Chronic Disease through Lifestyle Change?

1:15 pm Introductions, Discussion and Q&A

**Kofi Essel, MD, MPH, FAAP** (Invited), *Food as Medicine Director, Elevance Health; Clinical Associate Professor of Pediatrics, School of Medicine, George Washington University, Washington, DC*

**Alyson Goodman, MD, MPH** (Invited), *Medical Epidemiologist and Pediatrician, Centers for Disease Control and Prevention, Washington, DC*

**Jacob Mirsky, MD**, *Medical Director, Massachusetts General Hospital; Assistant Professor, Harvard Medical School; Founder and Owner, Lifestyle Medicine Consulting LLC, Boston, MA*

**Kevin Volpp, MD, PhD** (Invited), *Mark V. Pauly President's Distinguished Professor, Perelman School of Medicine and Health Care Management, Wharton School, Director, Penn Center for Health Incentives and Behavioral Economics, University of Pennsylvania; Philadelphia, PA*

**Laurie Whitsel, PhD, FAHA**, *National VP of Policy Research and Translation, American Heart Association and American Stroke Association, Pittsburgh, PA*

### Concurrent Session 2: Strategies for Successful Implementation of the CMS Transforming Episode Accountability Model (TEAM) Model

1:15 pm Introductions, Discussion and Q&A

**Michael Barbati, MHA**, *Vice President Government Programs, Advocate Health, Chicago, IL*

**Bill Nordmark**, *President and Chief Executive Officer, Enlace Health; Former Chief Growth Officer, PaySpan, Atlanta, GA*

**Thomas Tsai, MD**, *Medical Director for Health Policy Research, American College of Surgeons; Former Co-Director, Healthcare Quality and Outcomes Lab, Harvard T.H. Chan School of Public Health; Former Senior Policy Advisor for the COVID-19, Response/Testing and Treatments Coordinator, The White House, Chestnut Hill, MA*

**Robert E. Mechanic, MBA**, *Executive Director, Institute for Accountable Care; Senior Fellow, Heller School of Social Policy and Management at Brandeis, Newton Centre, MA (Moderator)*

### Concurrent Session 3: Safety Net Provider Participation in CMS/CMMI Value-based Care Models

1:15 pm Introductions, Discussion and Q&A

**Henish A. Bhansali, MD, FACP** (Invited), *Chief Medical Officer, Medical Home Network; Board, National Association of ACOs; Former SVP & Medical Director, Duly Health and Care, Chicago, IL*

**Margarita Ollet, MBA** (Invited), *Senior Vice President, Administrative Services, Health Choice Network, Miami, FL*

**Christina Severin, MPH** (Invited), *President and Chief Executive Officer, Community Care Cooperative; Former President & CEO, Beth Israel Deaconess Care Organization, Cambridge, MA*

**W. June Simmons, MSW** (Invited), *President and Chief Executive Officer, Partners in Care Foundation; Co-Chair, Partnership to Align Social Care, Los Angeles CA*

**Kyu Rhee, MD, MPP**, *Chief Executive Officer and President, National Association of Community Health Centers; Senior Scholar, Stanford University School of Medicine; Associate Professor, Johns Hopkins Bloomberg School of Public Health, Boston, MA (Moderator)*

## PLENARY SESSION

2:00 pm

### Making Consumer Empowerment Real



**Debra Ness, MS**, *Health and Economic Policy Consultant, Debra L. Ness Consulting; Former President, National Partnership for Women & Families, Rockville, MD*



**Melanie (Gleiman) Phelps, DrPH, JD**, *Senior Advocacy Advisor, Health System Transformation, American Heart Association; Senior Vice President, Health System Innovation, North Carolina Medical Society, Wilmington, NC*



**Sophia Tripoli, MPH**, *Senior Director of Health Policy, Families USA; Former Project Officer, State Innovation Group, Center for Medicare and Medicaid Innovation; Former Senior Health Policy Analyst, National Governors Association, Washington, DC*



**Randall L. Rutta, MA**, *Chief Executive Officer, National Health Council; Board, Patient Focused Medicines Development, Partnership to Fight Chronic Disease & Medical Device Innovation Consortium; Former President & CEO, American Autoimmune Related Disease Association; Former President and CEO, Easterseals, Washington, DC (Moderator)*

2:45 pm

### The Savings Imperative High Performing Provider



**Melinda J.B. Buntin, PhD** (Invited), *Bloomberg Distinguished Professor, Bloomberg School of Public Health & Carey Business School, Johns Hopkins University; Author, The Value Zeitgeist: Considering the Slowdown in Health Care Spending Growth, April 2025, NEJM, Baltimore, MD*



**Aditya Kumar, MBA** (Invited), *Senior Partner, McKinsey; Former Senior Advisor, American Rescue Plan, White House; Former, Deputy Asst. to the Vice President, Washington, DC*



**Kristen Mucitelli-Heath**, *Senior Vice President, Population Health & Advocacy, St. Joseph's Health and St. Peter's Health Partners; Former Interim Executive Director, Central New York Care Collaborative, Syracuse, NY*



**Stephen W. Nuckolls, MAC**, *Chief Executive Officer, Coastal Carolina Quality Care; Chief Executive Officer, Coastal Carolina Health Care, PA, New Bern, NC*



**Aisha Pittman, MPH**, *Senior Vice President of Government Affairs, National Association of ACOs; Former Vice President, Premier Inc., Washington, DC (Moderator)*

3:30 pm

### DAY I ADJOURNMENT

**DAY 2: THURSDAY, SEPTEMBER 4, 2025**

**MORNING PLENARY SESSION**

**10:00 am Co-chair Introductions**



**Mara McDermott, JD**, Chief Executive Officer, Accountable for Health; Former Senior Vice President of Federal Affairs, America's Physician Groups, Washington, DC (Co-chair)

**10:15 am The Role of AI in the Successful Operation of CMS and CMMI Value-based Care Models**



**Lisa Bari, MBA, MPH**, Head of External Affairs, Innovaccer; Former Health IT, Interoperability, and Artificial Intelligence Lead, Center for Medicare and Medicaid Innovation, San Francisco, CA



**Tamra Ruymann, MBA**, Chief of Digital Health, Physicians of Southwest Washington, Olympia, WA



**Jacob Shiff, MBA**, Chief AI and Technology Officer, Center for Medicare and Medicaid Innovation; Founder, Anomaly (Healthcare AI), Washington, DC



**Brian Anderson, MD**, President & Chief Executive Officer, Coalition for Health AI (CHAI); Member, Expert Working Group on AI Risk & Accountability, OECD.AI; Impact Fellow, UC Berkeley School of Public Health, Boston, MA (Moderator)

**11:00 am Medicaid Value-based Care**



**Taylor Beery**, Co-Founder and Chief Operating Officer, Imagine Pediatrics; Executive Director, Coalition for Healthcare Innovation; Former Director of Policy, Office of the Federal Coordinator for Gulf Coast Rebuilding, US Department of Homeland Security; Former Special Assistant to the Deputy Secretary, US Department of Commerce, Nashville, TN

**CONCURRENT SESSIONS GROUP 2**

11:45 am – 12:30 pm

**Concurrent Session 4: Case Studies in Successful ACO Reach Implementation and Operations Strategies**

**11:45 am Introductions, Discussion and Q&A**

**Katie Boyer, MPPA**, Senior Director, Policy & Government Affairs, agilon health; Former Senior Advisor, Legislative & Regulatory Affairs, Nemours, Arlington, VA

**Travis Broome**, Senior Vice President for Policy and Economics, Aledade; Former Team Lead, Health Information Technology Group, Center for Medicare, Centers for Medicare & Medicaid Services, Asheville, NC

**Aaron DeBoer, MBA, MHA**, Executive Vice President, Honest Health; Board, Health Care Transformation Task Force; Advisor, Rubicon Founders; Former Senior Vice President, Optum, Aurora, CO

**Theresa Dreyer, MPH**, Executive Director, Health Care Transformation Task Force; Former Lead, Value Based Care, Association of American Medical Colleges; Former Model Lead, Centers for Medicare and Medicaid Services, Washington, DC (Moderator)

**Concurrent Session 5: Impact of the WISer Model on Providers**

**11:45 am Introductions, Discussion and Q&A**

**Seth Edwards, MHA**, Vice President, Population Health and Value-Based Care, Premier, Inc., Charlotte, NC

**Robert G. Homchick, JD**, Partner and Former Health Law Group, Chair, Davis Wright Tremaine LLP, Seattle, WA

**Ashley Ridlon, MSc**, Vice President, Health Policy, Evolent; Former Health Insurance Specialist, Care Transitions Field Director, Partnership for Patients, Center for Medicare & Medicaid Innovation, Centers for Medicare & Medicaid Services, Washington, DC

**Aisha Pittman, MPH**, Senior Vice President of Government Affairs, National Association of ACOs; Former Vice President, Premier Inc, Washington, DC (Moderator)

**Concurrent Session 6: Partnering and Working with an Enabler: What to Know Before You Decide**

**11:45 am Introductions, Discussion and Q&A**

**Travis Broome** (Invited), Senior Vice President for Policy and Economics, Aledade; Former Team Lead, Health Information Technology Group, Center for Medicare, Centers for Medicare & Medicaid Services, Asheville, NC

**Kate de Lisle**, Principal, Leavitt Partners; Former Payment & Delivery Transformation Research Manager, Accountable Care Learning Collaborative, Seattle, WA

**David Muhlestein, JD, PhD**, Chief Executive Officer, Simple Healthcare; Visiting Policy Fellow, Duke-Margolis Institute for Health Policy; Former Chief Research & Innovation Officer, Health Management Associates, Orlando, FL (Moderator)

**12:30 pm Luncheon Break**

**DAY 2 AFTERNOON PLENARY SESSION**

**1:00 pm Co-chair Introductions**



**Susan Dentzer, MS**, President and Chief Executive Officer, America's Physician Groups; Former Editor in Chief, Health Affairs; Former Health Correspondent, PBS NewsHour, Washington, DC (Co-chair)

**1:15 pm The Future of Mandatory Models**



**Elizabeth Fowler, PhD, JD**, Deputy Administrator and Director, CMS Center for Medicare and Medicaid Innovation; Former EVP of Programs, The Commonwealth Fund; Former VP, Global Health Policy, Johnson & Johnson; Former Special Assistant to President Obama; Former Chief Health Counsel, Senate Finance Committee, Washington, DC



**Hoangmai (Mai) Pham, MD, MSHCM**, Founder and President, Institute for Exceptional Care; Former VP, Provider Alignment Solutions, Anthem; Former Chief Innovation Officer, Center for Medicare and Medicaid Innovation, Center for Medicare and Medicaid Services, Washington, DC



**William Shrank, MD, MSHS**, Chief Executive Officer, Aradigm; Venture Partner, Andreessen Horowitz; Former Chief Medical Officer, Humana; Former Senior Vice President, Chief Scientific Officer and Chief Medical Officer of Provider Innovation, CVS Health; Former Director of Innovation, CMMI, Washington, DC



**Theresa Dreyer, MPH**, Chief Executive Officer, Health Care Transformation Task Force; Former Lead, Value Based Care, Association of American Medical Colleges; Former Model Lead, Centers for Medicare and Medicaid Services, Washington, DC (Moderator)

All times are EST.

2:00 pm

### Possible Future CMMI Medicare Advantage Models



**Joseph J. Albanese, Jr., MPP** (Invited), *Policy Advisor, Center for Medicare, Center for Medicare and Medicaid Services; Former Senior Policy Analyst, Paragon Health Institute; Former Program Examiner, Medicare Team, Office of Management and Budget, the White House, Washington, DC*



**Michael Chernew, PhD**, *Chair, MedPAC; Leonard D. Schaeffer Professor of Health Care Policy, Department of Health Care Policy, and Director, Healthcare Markets and Regulation Lab, Harvard Medical School, Cambridge, MA*



**Boris Vabson, PhD**, *Senior Advisor and Head of MA Strategy, Center for Medicare and Medicaid Innovation; Faculty Member and Researcher (on leave), Harvard Medical School, Washington, DC*



**Jennifer Podulka, MPAff**, *Senior Vice President of Federal Policy, America's Physician Groups; Former Senior Policy Analyst, Medicare Payment Advisory Commission, Washington, DC (Moderator)*

2:45 pm

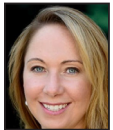
### The Future of Direct Contracting



**Adam Boehler**, *Founder & Managing Director, Rubicon Founders; Former CEO, International Development Finance Corporation; Former Deputy Administrator and Director, Center for Medicare, Centers for Medicare & Medicaid Services, Nashville, TN*



**Gabriel Drapos**, *Chief Operating Officer, Pearl Health; Expert, Primary Venture Partners; Former Director, Network Product, Centivo, East Brookfield, MA*



**Andrea Osborne, MSc**, *Chief Operating Officer, OnBelay Health; Former SVP, ACO Operations & Delegated Services, VillageMD, Carmel, IN*



**Valinda Rutledge, MBA**, *Executive Vice President for Advocacy and Education, America's Physician Groups; Former Group Director, Patient Care Model Group and BPCI Lead, Centers for Medicare and Medicaid Services, Washington, DC (Moderator)*

3:30 pm

### DAY 2 ADJOURNMENT

## DAY 3: FRIDAY, SEPTEMBER 5, 2025

### MORNING PLENARY SESSION: OVERVIEW OF OTHER CMS VALUE-BASED PAYMENT INITIATIVES, INCLUDING THE MEDICARE SHARED SERVICES PROGRAM (MSSP)

10:00 am

#### Co-chair Introductions and Keynote Address: It's Always the Incentives. Implications for ACO Benchmarking



**Farzad Mostashari, MD**, *Chief Executive Officer, Aledade; Former National Coordinator for Health Information Technology; Former Assistant Commissioner, New York City Department of Health and Mental Hygiene, Washington, DC (Co-chair)*

10:30 am

#### Keynote Fireside Chat: Medicare Shared Services Program (MSSP) Update



**Chris Klomp, MBA**, *Deputy Director and Director, Center for Medicare, Centers for Medicare & Medicaid Services; Former CEO, Collective Medical; Former VP, North American Private Equity, Bain Capital, Washington, DC*



**Interviewed by: Emily (DuHamel) Brower, MBA**, *President and Chief Executive Officer, National Association of ACOs (NAACOS); Former SVP, Clinical Integration & Physician Services, Trinity Health, Detroit, MI*

11:00 am

#### Case Studies in Successful MSSP Implementation and Operations



**Bartley Bryt, MD, MPH**, *Chief Medical Officer, Privia Health; Former Chief Medical Officer, Bright Health Care, Arlington, VA*



**Jessica Walradt, MS**, *Vice President, Value-based Care, Northwestern Medicine; Former Lead Specialist, Value-based Care Models, Association of American Medical Colleges, Chicago, IL*



**Sean Cavanaugh, MPH**, *Chief Policy Officer, Aledade; Former Deputy Administrator and Director, Center for Medicare, Centers for Medicare & Medicaid Services; Former Director, Health Care Finance, United Hospital Fund of New York, Washington, DC (Moderator)*

All times are EST.

## CONCURRENT SESSIONS GROUP 3

11:45 am –12:30 pm

### Concurrent Session 7: Case Studies in Successful Oncology Model Implementation and Operations Strategies

11:45 am Introductions, Discussion and Q&A

**Misty Chicchirichi, MSN**, Manager, Value Based Care Programs, Quality, Safety, Risk Management and Employee Health, Shenandoah Oncology, Stephenson, VA

**Anthony P. Lam, MD, MHSCh**, Chief Medical Officer, OPN Healthcare; Former Faculty, Stanford Cancer Center, Glendale, CA

**Samyukta Mullangi, MD, MBA**, Senior Medical Director, Thyme Care; Medical Oncologist @ Tennessee Oncology, Nashville, TN

**Purva H. Rawal, PhD**, Former Chief Strategy Officer, Center for Medicare and Medicaid Innovation, Centers for Medicare & Medicaid Service, Washington, DC (Moderator)

### Concurrent Session 8: Early Intervention, Better Outcomes: Clinical Approaches to High Value Kidney Care through CMMI

11:45 am Introductions, Discussion and Q&A

**Timothy Pflederer, MD**, Chief Medical Officer, Evergreen Nephrology; Former President, RenalCare Associates SC and Illinois Kidney Disease and Hypertension Center, Peoria, IL

**Jeff Giullian, MD, MBA**, Chief Medical Officer, DaVita Kidney Care; Former Chairman, Healthcare Payment Committee, Renal Physicians Association, Denver, CO

**Brendan Fulmer** (Invited), Vice President, CareBridge; Former Advisor to the Secretary, HHS; Former Senior Advisor, CMC, Nashville, TN (Moderator)

### Concurrent Session 9: ACOs and CMS Payment Policy: Working Together to Address Low-Value Skin Substitutes

11:45 am Introductions, Discussion and Q&A

**Chris Dawe**, President, Curana Health; Former Policy Advisor for Health Care, National Economic Council, The White House, Washington, DC

**Lisa (Winkler) Dombro**, President and Chief Operating Officer, ilumed; Operating Partner, Revelstoke Capital Partners; Former Chief Experience & Innovation Officer, agilon health, Park Ridge, IL

**Thomas Lally, MD**, Founder and Chief Executive Officer, Bloom Healthcare; Board, American Academy of Home Care Medicine, Denver, CO

**William Robinson**, Senior Vice President Accountable Care, HarmonyCares; Former Acting Deputy Director, Division of Outpatient Care, Centers for Medicare & Medicaid, Portland, MN (Moderator)

12:30 pm Luncheon Break

## DAY 3 CLOSING PLENARY SESSION: WORKING WITH CMS AND CMMI TO MAKE AMERICA HEALTHY AGAIN

1:00 pm



Co-chair Introductions

**Adam Boehler**, Founder & Managing Director, Rubicon Founders; Former CEO, International Development Finance Corporation; Former Deputy Administrator and Director, Center for Medicare, Centers for Medicare & Medicaid Services, Nashville, TN (Co-chair)

1:15 pm



Case Studies of Implementation and Coordination Success Across Models

**Tori Bratcher, MA, MPH**, System Vice President Population Health Operations, Trinity Health; Adjunct Faculty, Richard M. Fairbanks School of Public Health, Indiana University Indianapolis, IN



**Wyatt Decker, MD**, Chief Physician, Value-Based Care and Innovation, UnitedHealth Group; Former Chief Medical Information Officer, Mayo Clinic, Washington, DC



**Kyle Wailes, MBA**, President and Chief Executive Officer, Wellvana Health, Nashville, TN



**Emily (DuHamel) Brower, MBA**, President and Chief Executive Officer, National Association of ACOs (NAACOS); Former SVP, Clinical Integration & Physician Services, Trinity Health, Detroit, MI (Moderator)

2:00 pm



Featured Fireside Chat with Adam Boehler and Liz Fowler on the Future of Medicare Value-based Care

**Adam Boehler**, Founder & Managing Director, Rubicon Founders; Former CEO, International Development Finance Corporation; Former Deputy Administrator and Director, Center for Medicare, Centers for Medicare & Medicaid Services, Nashville, TN



**Elizabeth Fowler, PhD, JD**, Deputy Administrator and Director, CMS Center for Medicare and Medicaid Innovation; Former EVP of Programs, The Commonwealth Fund; Former VP, Global Health Policy, Johnson & Johnson; Former Special Assistant to President Obama; Former Chief Health Counsel, Senate Finance Committee, Washington, DC



**Interviewed by: Mark McClellan, MD, PhD**, Director, Robert J Margolis Center for Health Policy and Margolis Professor of Business, Medicine and Health Policy, Duke University; Former CMS Administrator and FDA Commissioner, Washington, DC

2:45 pm

SUMMIT ADJOURNMENT